

Client \_\_\_\_\_ Quantity \_\_\_\_\_

Project \_\_\_\_\_ Position \_\_\_\_\_

## FUN 600

**Model:** F60/30FRESE/1V10/T

**Cod:** MP01292121000



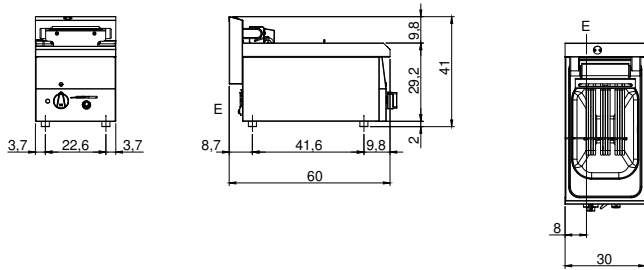
### Technical data

<b>Modularity:</b>	Top
<b>Dimension (mm):</b>	300x600x300
<b>Total electric power (kW):</b>	7,5
<b>Nr. Wells:</b>	1
<b>Well litres 1:</b>	10
<b>Well dimensions 1 (mm):</b>	244x364x169
<b>Electric power (V):</b>	380-415
<b>Ampere (A):</b>	11,5
<b>Phases:</b>	3N
<b>Cable section (mmq):</b>	5G2,5
<b>Frequency (Hz):</b>	50-60
<b>Net volume (m3):</b>	0,054
<b>Packing dimensions (mm):</b>	376x695x596
<b>Gross weight (kg):</b>	20
<b>Gross volume (m3):</b>	0,156

### Features

<b>Working top:</b>	Made of AISI 304 stainless steel with a thickness of 8/10 mm
<b>Type of heating:</b>	Direct
<b>Knobs:</b>	Knobs are made from a sturdy heat-resistant polymer blend
<b>Heating:</b>	Tilting heating elements for efficient cleaning

Technical draw



E: Electric power