

Client _____ Quantity _____

Project _____ Position _____

FUN 600

Model: F60/30GRLI/T

Cod: MP01452111002



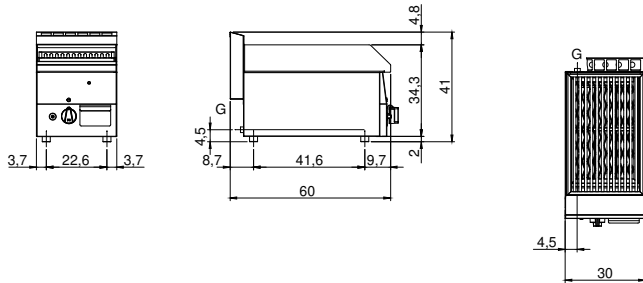
Technical data

Modularity:	Top
Dimension (mm):	300x600x300
Total gas power (Kcal/h):	4730
Total gas power (kW):	5,5
Cooking zone dimensions 1 (LxD mm):	n°1 681.058.00 (270x
Gas connection:	1/2"
Net volume (m3):	0,054
Packing dimensions (mm):	376x695x596
Gross weight (kg):	33
Gross volume (m3):	0,156

Features

Grill:	In stainless steel
Working top:	Made of AISI 304 stainless steel with a thickness of 8/10 mm
Knobs:	Knobs are made from a sturdy heat-resistant polymer blend
Flue:	Made in a single piece, which facilitates the alignment of the modules
Liquid collection container:	Removable and dishwasher safe
Upright Splash guard:	On two sides
Kit Gas:	Natural gas conversion kit 30/50 m/bar (tested with natural gas G20)

Technical draw



G: Gas connection 1/2"