

Client _____ Quantity _____
 Project _____ Position _____

FUN 600

Model: F60/60FRES/2V10/T

Cod: MP01292121003



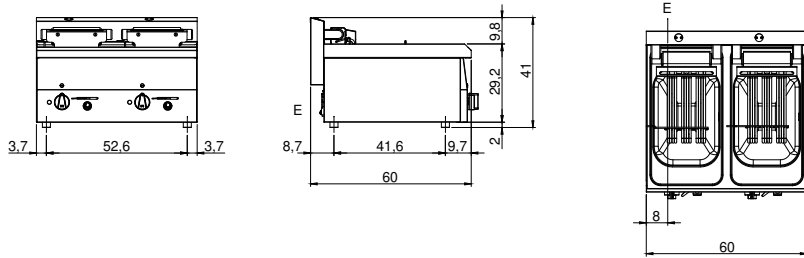
Technical data

Modularity:	Top
Dimension (mm):	600x600x300
Total electric power (kW):	18
Nr. Wells:	2
Well litres 1:	10
Well litres 2:	10
Well dimensions 1 (mm):	244x364x169
Well dimensions 2 (mm):	244x364x169
Electric power (V):	380-415
Ampere (A):	27,5
Phases:	3N
Cable section (mmq):	5G4
Frequency (Hz):	50-60
Net volume (m3):	0,108
Packing dimensions (mm):	676x695x630
Gross weight (kg):	34
Gross volume (m3):	0,296

Features

Working top:	Made of AISI 304 stainless steel with a thickness of 8/10 mm
Type of heating:	Direct
Knobs:	Knobs are made from a sturdy heat-resistant polymer blend
Heating:	Tilting heating elements for efficient cleaning

Technical draw



E: Electric power