

Client \_\_\_\_\_ Quantity \_\_\_\_\_  
Project \_\_\_\_\_ Position \_\_\_\_\_

## FUN 600

**Model:** F60/60FRGV/2V8/T

**Cod:** MP01292111001



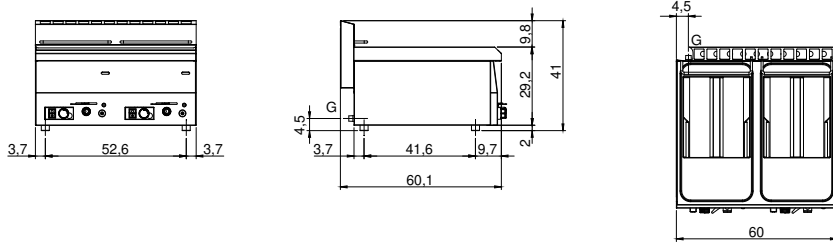
### Technical data

<b>Modularity:</b>	Top
<b>Dimension (mm):</b>	600x600x300
<b>Total gas power (Kcal/h):</b>	11694
<b>Total gas power (kW):</b>	13,6
<b>Nr. Wells:</b>	2
<b>Well litres 1:</b>	8
<b>Well litres 2:</b>	8
<b>Well dimensions 1 (mm):</b>	247x300x210
<b>Well dimensions 2 (mm):</b>	247x300x210
<b>Gas connection:</b>	1/2"
<b>Net volume (m3):</b>	0,108
<b>Packing dimensions (mm):</b>	676x695x630
<b>Gross weight (kg):</b>	42
<b>Gross volume (m3):</b>	0,296

### Features

<b>Working top:</b>	Made of AISI 304 stainless steel with a thickness of 8/10 mm
<b>Type of heating:</b>	Direct
<b>Knobs:</b>	Knobs are made from a sturdy heat-resistant polymer blend
<b>Kit Gas:</b>	Natural gas conversion kit 30/50 m/bar (tested with natural gas G20)

Technical draw



G: Gas connection 1/2"