

Client \_\_\_\_\_ Quantity \_\_\_\_\_  
 Project \_\_\_\_\_ Position \_\_\_\_\_

## FUN 650

**Model:** F65/40PCGB/T

**Cod:** MP01012112000



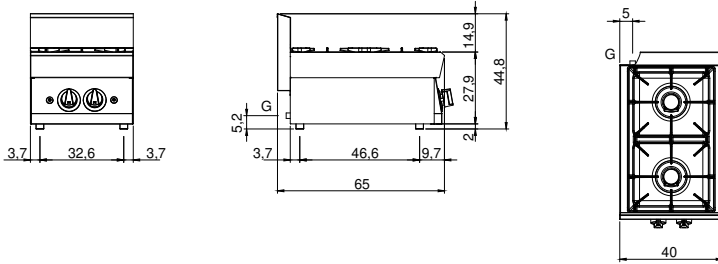
### Technical data

<b>Modularity:</b>	Top
<b>Dimension (mm):</b>	400x650x300
<b>Total gas power (Kcal/h):</b>	7395
<b>Total gas power (kW):</b>	8,6
<b>Gas connection:</b>	1/2"
<b>Net volume (m3):</b>	0,078
<b>Packing dimensions (mm):</b>	477x776x612
<b>Gross weight (kg):</b>	26
<b>Burner power 1 (kW):</b>	5
<b>Burner power 2 (kW):</b>	3,6
<b>Gross volume (m3):</b>	0,227

### Features

<b>Burners:</b>	Piezo ignition available in cast iron with single crown brass burner cap
<b>Grill:</b>	In cast iron with long spokes
<b>Working top:</b>	Made of AISI 304 stainless steel with a thickness of 10/10 mm and removable enamelled containers
<b>Knobs:</b>	Knobs are made from a sturdy heat-resistant polymer blend and are equipped with liquid anti-leakage washer
<b>Kit Gas:</b>	Natural gas conversion kit 30/50 m/bar (tested with natural gas G20)

Technical draw



G: Gas connection 1/2"