

Client \_\_\_\_\_ Quantity \_\_\_\_\_  
 Project \_\_\_\_\_ Position \_\_\_\_\_

## FUN 650

**Model:** F65/40SPE/T

**Cod:** MP01332122000



### Technical data

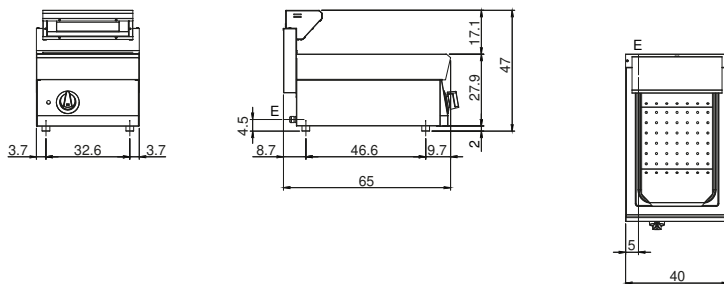
<b>Modularity:</b>	Top
<b>Dimension (mm):</b>	400x650x300
<b>Total electric power (kW):</b>	1
<b>Nr. Wells:</b>	1
<b>Well litres 1:</b>	25,5
<b>Electric power (V):</b>	220-240
<b>Ampere (A):</b>	5
<b>Phases:</b>	1
<b>Cable section (mmq):</b>	3G1
<b>Frequency (Hz):</b>	50-60
<b>Net volume (m3):</b>	0,078
<b>Packing dimensions (mm):</b>	477x776x612
<b>Gross weight (kg):</b>	22
<b>Gross volume (m3):</b>	0,227

### Features

<b>Working top:</b>	Made of AISI 304 stainless steel with a thickness of 10/10 mm
<b>Knobs:</b>	Knobs are made from a sturdy heat-resistant polymer blend and are equipped with liquid anti-leakage washer
<b>Heating:</b>	Infrared ceramic heating elements

Heated chip dump. The top, the bowl and the false bottom are made entirely of AISI 304 stainless steel; covering in AISI 430 stainless steel thickness 8/10; bottoms and internal parts in AISI 430 steel; internal reinforcements made of anti-corrosion material (aluminised sheet metal). Bowl GN 1/1 h. 15 cm Removable. Main switch. Ceramic infrared heating element. Indicator light to show heating element is in operation. Total power 1 kW. Electrical power supply V AC 230+1 50÷60 Hz.

### Technical draw



E: Electric power