

Client \_\_\_\_\_ Quantity \_\_\_\_\_  
 Project \_\_\_\_\_ Position \_\_\_\_\_

## FUN 650

**Model:** F65/70FRESE/2V10/T

**Cod:** MP01292122003



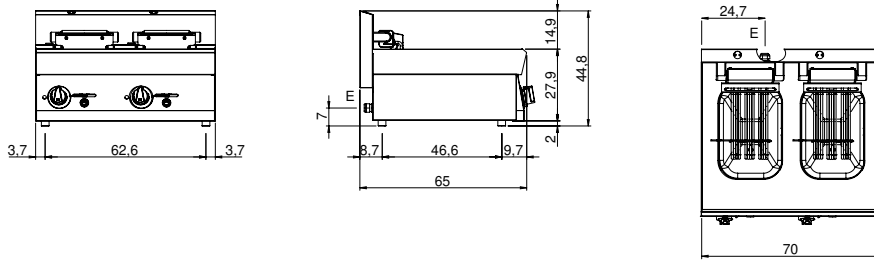
### Technical data

<b>Modularity:</b>	Top
<b>Dimension (mm):</b>	700x650x300
<b>Total electric power (kW):</b>	15
<b>Nr. Wells:</b>	2
<b>Well litres 1:</b>	10
<b>Well litres 2:</b>	10
<b>Well dimensions 1 (mm):</b>	244x364x169
<b>Well dimensions 2 (mm):</b>	244x364x169
<b>Electric power (V):</b>	380-415
<b>Ampere (A):</b>	23
<b>Phases:</b>	3N
<b>Cable section (mmq):</b>	5G4
<b>Frequency (Hz):</b>	50-60
<b>Net volume (m3):</b>	0,137
<b>Packing dimensions (mm):</b>	776x776x636
<b>Gross weight (kg):</b>	37,5
<b>Gross volume (m3):</b>	0,383

### Features

<b>Working top:</b>	Made of AISI 304 stainless steel with a thickness of 10/10 mm
<b>Type of heating:</b>	Direct
<b>Knobs:</b>	Knobs are made from a sturdy heat-resistant polymer blend and are equipped with liquid anti-leakage washer
<b>Heating:</b>	Tilting heating elements for efficient cleaning

Technical draw



E: Electric power