



Client _____ Quantity _____

Project _____ Position _____

FUN 700

Model: F70/70FRGV/2V13/P

Cod: MP01292113000

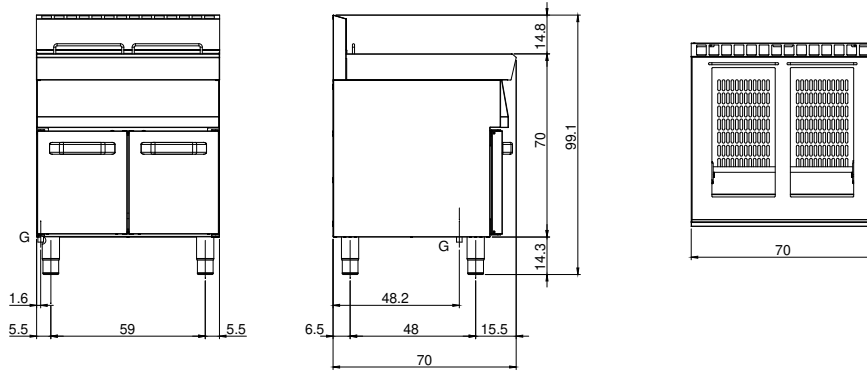
Technical data

Modularity:	On cabinet with door
Dimension (mm):	700x700x850
Total gas power (Kcal/h):	18917
Total gas power (kW):	22
Nr. Wells:	2
Well litres 1:	13
Well litres 2:	13
Well dimensions 1 (mm):	240x342x343
Well dimensions 2 (mm):	240x342x343
Gas connection:	1/2"
Net volume (m3):	0,417
Packing dimensions (mm):	776x776x1180
Gross weight (kg):	82
Gross volume (m3):	0,711

Features

Working top:	Made of AISI 304 stainless steel with a thickness of 10/10 mm
Type of heating:	Direct
Knobs:	Knobs are made from a sturdy heat-resistant polymer blend and are equipped with liquid anti-leakage washer
Kit Gas:	Natural gas conversion kit 30/50 m/bar (tested with natural gas G20)

Technical draw



G: Gas connection 1/2"