



Client _____ Quantity _____
 Project _____ Position _____

ROC 1100

Model: R110/80AGG **Market:** Extra UE **Cod:** MP01495115001

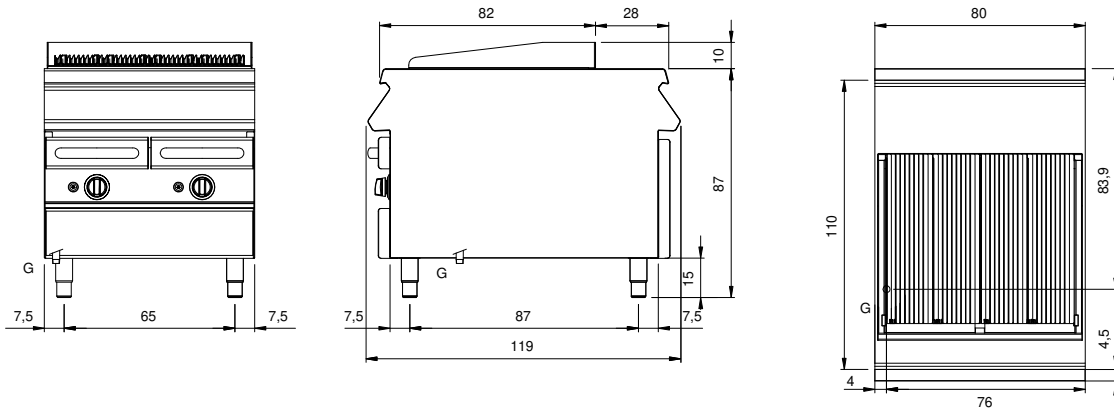
Technical data

Modularity:	On closed cabinet
Dimension (mm):	800x1100x870
Total gas power (Kcal/h):	18917
Total gas power (kW):	22
Cooking zone dimensions 1 (LxD mm):	n°2 981.096.00 (178, mm)
Cooking zone dimensions 2 (LxD mm):	n°2 981.096.00 (178, mm)
Gas connection:	1/2"
Net volume (m3):	0,766
Packing dimensions (mm):	880x1272x1274
Gross volume (m3):	1,426

Features

Grill:	In cast iron
Working top:	Made of AISI 304 stainless steel with a thickness of 2 mm
Knobs:	Made of aluminum with IPX5 water protection
Liquid collection container:	Removable and dishwasher safe
Upright Splash guard:	On three sides
Kit Gas:	Natural gas conversion kit 30/50 m/bar (tested with natural gas G20)

Technical draw



G: Gas connection 1/2"